

SeBoss®
Proper Food for Pets



Product
Catalogue



PET PRODUCTS 20
23

www.seboss.com.tr



SeBoss Proper Food for Pets NATURAL NUTRITION CONCEPT®



CATS

Unlike the dogs, and other omnivores (both herbivores, and carnivores) cats are real (that is "mandatory") carnivores: They provide their own nutritional requirement by eating up the other animals, and have a higher protein requirement than most of the other mammals. Cats obtain certain key nutrients from meat that cannot be obtained enough from plant-based nutrition (including taurine, arachidonic acid, A, and B12 vitamin). Without a constant supply of these nutrients, cats may face skin irritation, and hearing loss, as well as liver and heart problems.

Thus, a cat's ideal diet consists mostly of protein and fats supplied from small prey such as rodents, birds, small reptiles and amphibians. Some cats chew grass and other plants, but most biologists agree that such foods with a lot of cellulose only serve as aiding digestion and provide limited nutritional value.

So What is The Effect of SeBoss Natural Nutrition Concept?

Of course, it is not practical or humane to constantly provide your domestic cat with its own preferred prey. Also, cats can do a lot of harm to their local wildlife populations if left looking for food on their own. Therefore we feed them with "dry" food which combine animal products with plant-based starchy nutrients or with canned "wet" food with meat-based nutrients. Many of these foods should be formulated.... on the basis that in an all-natural situation probably contain parts of animals that cats will never encounter and that far fewer will hunt and kill.

SeBoss Natural Nutrition Concept; is formulated to provide the ingredients suitable for cats' natural body metabolism in a complete and balanced way. You will have provided them the nutrition facts necessary for their bodies, which is needed in their natural processes, and should be taken from the outside at each meal continuously. SeBoss will both be your indispensable choice that combines its delicious content with the natural concept, and will be your main source of nutrition to help your cat live healthy.



DOGS

The history of dogs dates back to a process that dates back to the end of the ice age, which is described as preferential evolution. Wolves, who had difficulty in finding food during this period, discovered a unique food source; human... Humans were hunters and had amazing waste; meat. In exchange for eating these wastes, the wolves made it their duty to protect the food workers, people. This cooperation brought larger foods with it. People were no longer sharing their waste, but also special meat for them. Wolves have discovered one more thing; that being cute is more advantageous in maintaining their lineage. Thus, wolves evolved into dogs as a cute breed.

Although dogs, and wolves are little similar today, what they have in common is the direct relationship between food and the metabolism of those foods. For the dogs that are carnivores, the more compatible the food is with natural nutrition processes; it is also the key to their healthier and longer lives.

So What is The Effect of SeBoss Natural Nutrition Concept?

Of course, it is no longer possible to expect the dogs to hunt like wolves. The fact that most of the dogs living in our homes live in these areas with health is as much as your love and interest; the contents, and nutritional values of Dry food and Wet food you use in their nutrition; in short, it is directly related to its formula.

SeBoss Natural Nutrition Concept; is formulated to provide the ingredients suitable for dogs' natural body metabolism in a complete and balanced way. With SeBoss foods, you will have provided the most suitable nutrition facts for the natural nutrition structures of dogs in a complete, and balanced way at each meal. SeBoss will both be your indispensable choice that combines its delicious content with the natural concept, and will be your main source of nutrition to help your dog live healthy.



“It is prepared in accordance with the diet of the ancestors of cats and dogs.”



Special product

It is a complete and balanced, cat food specially, formulated by cat / dog nutritionists to provide the daily nutrition requirements of all breeds.

proper premium adult foods
CATS
 kitten

MIX

MULTICOLOR

with LAMB-CHICKEN-FISH



15 Kg - 2,5 Kg



For an optimal balance With lots of valuable vitamins With Omega 3 and Omega 6 fatty acids

26%
PROTEIN

14%
FAT

3 Different Colors

COMPLETE AND BALANCED MULTICOLOR FOOD FOR ADULT CATS

It is a complete and balanced 3-color adult cat food containing fish protein, carefully formulated by cat/dog nutritionists to meet the daily nutritional needs of all adult breeds.

INGREDIENTS: Dried lamb, fish meal and chicken (min. 5% each), rice, corn, brewer's yeast, wheat and wheat derivatives, chicken fat, fish oil, vitamins and minerals.

ANALYTICAL COMPONENTS: Protein 26%, Fat Content 14%, Crude Ash 9%, Crude Cellulose 6%, Calcium 2%, Phosphorus 1%, Sodium 0.5%, Moisture 8%

NUTRITIONAL ADDITIONALS: Vitamin A 12500 Iu/kg, Vitamin D 1000 tu/kg, Vitamin E 80 mg/kg, Vitamin C 120 mg/kg, Omega 6 0.4 mg/kg, Omega 3 0.2 mg/kg, Taurine 1000 ma/k

TECHNOLOGICAL ADDITIONS: Antioxidants, preservatives.

FEEDING INSTRUCTIONS: Start the food in the amounts indicated in the table. However, you can change the amounts to be given according to your cat's appetite and condition. If you are giving this food to your cat for the first time, mix it with existing food for one week initially. Your cat's nutritional needs may vary depending on age, breed, size-day, activity level and environmental conditions. The nutrition table is arranged according to the daily amount of food. By taking this table as a guide, you can feed your cat by dividing the appropriate amount according to the number of meals, at least 2 meals a day. Always keep fresh, and clean water available. Store the product in a cool, and dry place.



GREAT FOR SKIN
AND COAT



BOOSTS THE
IMMUNE SYSTEM



SUPPORTS
HEART HEALTH



REGULATES THE
DIGESTION



SUPPORTS THE
URINARY TRACT



with STERILISED SALMON



15 Kg - 2,5 Kg

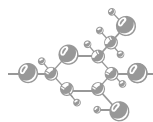
ADULT



For an optimal balance  With lots of valuable vitamins  With Omega 3 and Omega 6 fatty acids

30%
PROTEIN

12%
FAT



CELLULOSE
*Combination of Natural Fiber for Healthy Digestion

EN

COMPLETE AND BALANCED STERILISE FOOD FOR NEUTERED CATS

It has been carefully formulated by cat/dog nutritionists to meet the daily nutritional needs of all adult breeds. Cat food with complete and balanced salmon protein.

INGREDIENTS: Dried animal protein and hydrolyzed salmon protein (salmon min 5%), fish meal, rice, corn, corn gluten, wheat, chicken fat, fish oil, vitamins and minerals.

ANALYTICAL COMPONENTS: Protein 30%, Fat Content 12%, Crude Ash 7%, Crude Cellulose 5%, Calcium 2%, Phosphorus 1%, Sodium 0.5%, Moisture 8%

NUTRITIONAL ADDITIONALS: Vitamin A 20.000 lu/kg, Vitamin D 1.500 lu/kg, Vitamin E 160 mg/kg, Vitamin C 120 mg/kg, Omega 6 0.4 mg/kg, Omega 3 0.2 mg/kg, Taurine 1800 mg/kg

TECHNOLOGICAL ADDITIONS: Antioxidants, preservatives.

FEEDING INSTRUCTIONS: Start the food in the amounts indicated in the table. However, you can change the amounts to be given according to your cat's appetite and condition. If you are giving this food to your cat for the first time, mix it with existing food for one week initially. Your cat's nutritional needs may vary depending on age, breed, size-day, activity level and environmental conditions. The nutrition table is arranged according to the daily amount of food. By taking this table as a guide, you can feed your cat by dividing the appropriate amount according to the number of meals, at least 2 meals a day. Always keep fresh, and clean water available. Store the product in a cool, and dry place.



GREAT FOR SKIN
AND COAT



BOOSTS THE
IMMUNE SYSTEM



SUPPORTS
HEART HEALTH



REGULATES THE
DIGESTION



SUPPORTS THE
URINARY TRACT

with FISH FORMULA



15 Kg - 2,5 Kg
ADULT



For an optimal balance With lots of valuable vitamins With Omega 3 and Omega 6 fatty acids

26%
PROTEIN

14%
FAT

TAURINE

EN

COMPLETE AND BALANCED FOOD WITH FISH ADULT CAT

It has been carefully formulated by cat/dog nutritionists to meet the daily nutritional needs of all adult breeds. Cat food with complete and balanced chicken protein.

INGREDIENTS: Dried animal protein and fish meat (fish min 5%), rice, corn, wheat, wheat derivatives, chicken fat, fish oil, vitamins and minerals.

ANALYTICAL COMPONENTS: Protein 26%, Fat Content 14%, Crude Ash 9%, Crude Cellulose 6%, Calcium 2%, Phosphorus 1%, Sodium 0.5%, Moisture 8%

NUTRITIONAL ADDITIONALS: Vitamin A 12.500 lu/kg, Vitamin D 1.000 lu/kg, Vitamin E 80 mg/kg, Vitamin C 120 mg/kg, Omega 6 0.4 mg/kg, Omega 3 0.2 mg/kg, Taurine 1000 mg/kg

TECHNOLOGICAL ADDITIONS: Antioxidants, preservatives.

FEEDING INSTRUCTIONS: Start the food in the amounts indicated in the table. However, you can change the amounts to be given according to your cat's appetite and condition. If you are giving this food to your cat for the first time, mix it with existing food for one week initially.

Your cat's nutritional needs may vary depending on age, breed, size-day, activity level and environmental conditions. The nutrition table is arranged according to the daily amount of food. By taking this table as a guide, you can feed your cat by dividing the appropriate amount according to the number of meals, at least 2 meals a day. Always keep fresh, and clean water available with the food. Store the product in a cool, and dry place.



GREAT FOR SKIN
AND COAT



BOOSTS THE
IMMUNE SYSTEM



SUPPORTS
HEART HEALTH



REGULATES THE
DIGESTION



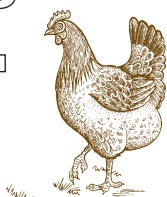
SUPPORTS THE
URINARY TRACT

with CHICKEN FORMULA



15 Kg - 2,5 Kg

ADULT



EN

COMPLETE AND BALANCED FOOD WITH CHICKEN CAT FOOD

It has been carefully formulated by cat/dog nutritionists to meet the daily nutritional needs of all adult breeds. Cat food with complete and balanced chicken protein.

INGREDIENTS: Dried animal protein and chicken meat (chicken min 5%), rice, corn, wheat, wheat derivatives, chicken fat, fish oil, brewer's yeast, vitamins and minerals.

ANALYTICAL COMPONENTS: Protein 26%, Fat Content 14%, Crude Ash 9%, Crude Cellulose 6%, Calcium 2%, Phosphorus 1%, Sodium 0.5%, Moisture 8%

NUTRITIONAL ADDITIONALS: Vitamin A 12.500 lu/kg, Vitamin D 1.000 lu/kg, Vitamin E 80 mg/kg, Vitamin C 120 mg/kg, Omega 6 0.4 mg/kg, Omega 3 0.2 mg/kg, Taurine 1000 mg/kg

TECHNOLOGICAL ADDITIONS: Antioxidants, preservatives.

FEEDING INSTRUCTIONS: Start the food in the amounts indicated in the table. However, you can change the amounts to be given according to your cat's appetite and condition. If you are giving this food to your cat for the first time, mix it with existing food for one week initially. Your cat's nutritional needs may vary depending on age, breed, size-day, activity level and environmental conditions. The nutrition table is arranged according to the daily amount of food. By taking this table as a guide, you can feed your cat by dividing the appropriate amount according to the number of meals, at least 2 meals a day. Always keep fresh, and clean water available. Store the product in a cool, and dry place.



For an optimal balance



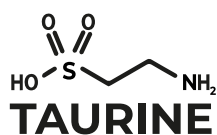
With lots of valuable vitamins



With Omega 3 and Omega 6 fatty acids

26%
PROTEIN

14%
FAT



GREAT FOR SKIN
AND COAT



BOOSTS THE
IMMUNE SYSTEM



SUPPORTS
HEART HEALTH



REGULATES THE
DIGESTION



SUPPORTS THE
URINARY TRACT

with CHICKEN FORMULA



15 Kg - 2,5 Kg

KITTEN

For an optimal balance With lots of valuable vitamins With Omega 3 and Omega 6 fatty acids

30%
PROTEIN

16%
FAT

TAURINE

EN

COMPLETE AND BALANCED FOOD WITH CHICKEN FOR KITTENS

It has been carefully formulated by cat/dog nutritionists to meet the daily nutritional needs of all kitten breeds. Cat food with complete and balanced chicken protein.

INGREDIENTS: Chicken and poultry proteins (chicken min. 5%, rice and rice derivatives, wheat and wheat derivatives, maize and maize derivatives, chicken oil, fish oil, brewer's yeast, hydrolyzed fish derivatives, carob flour, vitamins, minerals, prebiotic, yucca manan, oligo saccharides.

ANALYTICAL COMPONENTS: Protein 30%, Fat Content 16%, Crude Ash 6%, Crude Cellulose 3%, Calcium 2%, Phosphorus 1%, Sodium 0.5%, Moisture 8%

NUTRITIONAL ADDITIONALS: Vitamin A 15.000 lu/kg, Vitamin D 1.250 lu/kg, Vitamin E 100 mg/kg, Vitamin C 150 mg/kg, Omega 6 0.4 mg/kg, Omega 3 0.2 mg/kg, Taurine 1200 mg/ kg

TECHNOLOGICAL ADDITIONS: Antioxidants, preservatives.

FEEDING INSTRUCTIONS: Start the food in the amounts indicated in the table. However, you can change the amounts to be given according to your cat's appetite and condition. If you are giving this food to your cat for the first time, mix it with existing food for one week initially.

Your cat's nutritional needs may vary depending on age, breed, size-day, activity level and environmental conditions. The nutrition table is arranged according to the daily amount of food. By taking this table as a guide, you can feed your cat by dividing the appropriate amount according to the number of meals, at least 2 meals a day. Always keep fresh, and clean water available. Store the product in a cool, and dry place.



GREAT FOR SKIN
AND COAT



BOOSTS THE
IMMUNE SYSTEM



SUPPORTS
HEART HEALTH

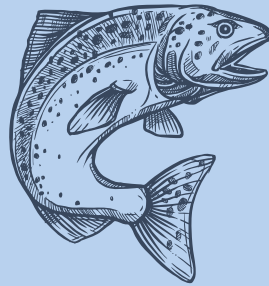


REGULATES THE
DIGESTION



SUPPORTS THE
URINARY TRACT

WET FOOD



with *Salmon*

★ **PATE & TASTY** ★



Salmon made Freshly prepared and cooked for great taste and natural nutrition. Balanced & Complete nutrition with minerals and vitamins.

COMPOSITION

Meat and animal derivatives Salmon (min. 4%), derivatives of vegetables origin, minerals.

ADDITIVES PER KG/ NUTRITIONAL ADDITIVES

Vitamin A 1000 i.u./Kg, Vitamin D3 100 i.u./Kg, Vitamin E 13 i.u./Kg, Zinc (Zinc Sulphate Monohydrate) 5.0 mg/kg, Manganese (Manganous Sulphate Monohydrate) 2,5 mg/kg Selenium (Sodium Selenite) 0.03 mg/kg, Iodine (Calcium iodate anhydrous) 0.25 mg/kg, Technological additives: Cassia Gum 1275 mg/kg

ANALYTICAL CONSTITUENTS

Protein 8.0, Fat 5.0, Ash 2.0, Fibr 0.4, Moisture 80

GREAT FOR SKIN
AND COAT

REGULATES THE
DIGESTION

BOOSTS THE
IMMUNE SYSTEM

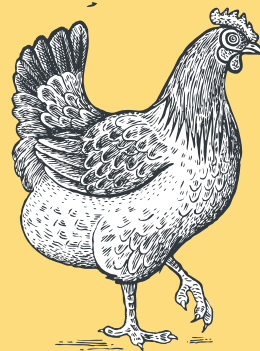
SUPPORTS
HEART HEALTH

SUPPORTS THE
URINARY TRACT



ADULT
400 g e

WET FOOD



with
Chicken

Chicken made Freshly prepared and cooked for great taste and natural nutrition. Balanced & Complete nutrition with minerals and vitamins.

COMPOSITION

Meat and animal derivatives Chicken (min. 4%), derivatives of vegetables origin, minerals.

ADDITIVES PER KG/ NUTRITIONAL ADDITIVES

Vitamin A 1000 i.u./Kg, Vitamin D3 100 i.u./Kg, Vitamin E 13 i.u./Kg, Zinc (Zinc Sulphate Monohydrate) 5.0 mg/kg, Manganese (Manganous Sulphate Monohydrate) 2,5 mg/kg Selenium (Sodium Selenite) 0.03 mg/kg, Iodine (Calcium iodate anhydrous) 0.25 mg/kg, Technological additives: Cassia Gum 1275 mg/kg

ANALYTICAL CONSTITUENTS

Protein 8.0, Fat 5.0, Ash 2.0, Fibr 0.4, Moisture 80

★ PATE&TASTY ★



GREAT FOR SKIN
AND COAT

REGULATES THE
DIGESTION

BOOSTS THE
IMMUNE SYSTEM

SUPPORTS
HEART HEALTH

SUPPORTS THE
URINARY TRACT

ADULT
400 g^e

WET FOOD



★ **PATE & TASTY** ★



GREAT FOR SKIN
AND COAT

REGULATES THE
DIGESTION

BOOSTS THE
IMMUNE SYSTEM

SUPPORTS
HEART HEALTH

SUPPORTS THE
URINARY TRACT



with

Lamb

Lamb made Freshly prepared and cooked for great taste and natural nutrition. Balanced & Complete nutrition with minerals and vitamins.

COMPOSITION

Meat and animal derivatives Lamb (min. 4%), derivatives of vegetables origin, minerals.

ADDITIVES PER KG/ NUTRITIONAL ADDITIVES

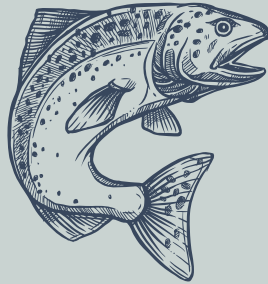
Vitamin A 1000 i.u./Kg, Vitamin D3 100 i.u./Kg, Vitamin E 13 i.u./Kg, Zinc (Zinc Sulphate Monohydrate) 5.0 mg/kg, Manganese (Manganous Sulphate Monohydrate) 2,5 mg/kg Selenium (Sodium Selenite) 0.03 mg/kg, Iodine (Calcium iodate anhydrous) 0.25 mg/kg, Technological additives: Cassia Gum 1275 mg/kg

ANALYTICAL CONSTITUENTS

Protein 8.0, Fat 5.0, Ash 2.0, Fibr 0.4, Moisture 80

ADULT
400 g e

WET FOOD



with *Salmon*
Sterilised

★ **PATE & TASTY** ★



GREAT FOR SKIN
AND COAT

REGULATES THE
DIGESTION

BOOSTS THE
IMMUNE SYSTEM

SUPPORTS
HEART HEALTH

SUPPORTS THE
URINARY TRACT



Salmon made Freshly prepared and cooked for great taste and natural nutrition. Balanced & Complete nutrition with minerals and vitamins.

COMPOSITION

Meat and animal derivatives (Salmon. Min. 4%), derivatives of vegetables origin, minerals.

ADDITIVES PER KG/ NUTRITIONAL ADDITIVES

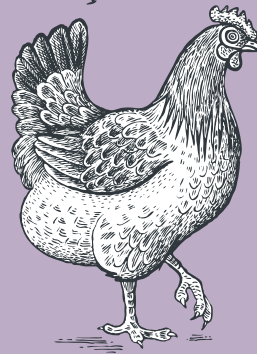
Vitamin A 1,000 i.u./Kg, Vitamin D3 100 i.u./Kg, Vitamin E 10 i.u./Kg, Zinc (Zinc Sulphate Monohydrate) 5.0mg/kg, Manganese (Manganous Sulphate Monohydrate) 2,5mg/kg Selenium (Sodium Selenite) 0.02mg/kg, Iodine (Calcium iodate anhydrous) 0.2 mg/kg, Taurine 250 mg/kg, L-carnitine 0,08/ kg , Ammonium Chlorur 2 gr / kg, dl-methionine 0,3 gr/ kg. technological additives: cassia gum 1275 mg/kg

ANALYTICAL CONSTITUENTS

Protein 8.0, Fat 5.0, Ash 2.0, Fibre 0.2, Moisture 80

ADULT
400 g e

WET FOOD



with Chicken

Chicken made Freshly prepared and cooked for great taste and natural nutrition. Balanced & Complete nutrition with minerals and vitamins.

COMPOSITION

Meat and animal derivatives (Chicken min. 4%), derivatives of vegetables origin, minerals.

ADDITIVES PER KG/ NUTRITIONAL ADDITIVES

Nutritional Additives: Vitamin A 2,000 i.u./Kg, Vitamin D3 200 i.u./Kg, Vitamin E 20 i.u./Kg, Zinc (Zinc Sulphate Monohydrate) 10.0mg/kg, Manganese (Manganous Sulphate Monohydrate) 5.0mg/kg, Selenium (Sodium Selenite) 0.04mg/kg, Iodine (Calcium iodate anhydrous) 0.50mg/kg, Taurine 250 mg/kg

ANALYTICAL CONSTITUENTS

Protein 8.5, Fat 6.0, Ash 2.0, Fibr 0.4, Moisture 80

PATE & TASTY



GREAT FOR SKIN
AND COAT

REGULATES THE
DIGESTION

BOOSTS THE
IMMUNE SYSTEM

SUPPORTS
HEART HEALTH

SUPPORTS THE
URINARY TRACT



KITTEN
400 g^e



Special product

It is a complete and balanced, dog food specially, formulated by cat / dog nutritionists to provide the daily nutrition requirements of all breeds.

proper premium adult DOGS puppy foods

with LAMB & RICE



15 Kg - 3 Kg
ADULT



COMPLETE AND BALANCED FOR ADULT DOGS LAMB AND RICE DOG FOOD

It is a complete and balanced, lamb protein-containing dog food specially, formulated by cat / dog nutritionists to provide the daily nutritional requirements of all adult breeds.

INGREDIENTS: Dried animal protein and lamb (min. 5% lamb), rice (min. 5%), corn, wheat and wheat derivatives, chicken fat, brewer's yeast, fish oil, dried sugar beet, vitamins and minerals.

ANALYTICAL CONSTITUENTS: Protein 20%, Crude Fat 10%, Crude Ash 9%, Crude Cellulose 6%, Calcium 2%, Phosphorus 1%, Sodium 0.5%, Moisture 10%

NUTRITIONAL ADDITIVES: Vitamin A 12500 Iu/kg, Vitamin D 1000 Iu/kg, Vitamin E 80 mg/kg, Vitamin C 120 mg/kg, Omega 3 0.2 mg/kg Omega 6 0.4 mg/kg

FEEDING INSTRUCTION: The amounts given in the chart are for starters. You may change the amount of food according to your dog's appetite. If you give this food to your dog for the first time, during the first week, feeding should be a mixture of this product, and the existing food.

Your dog's nutritional requirements may differ depending on its age, breed, size, activity frequency, and environmental conditions. Feeding chart was arranged for recommended food amount. By the help of this chart you may feed at least 2 meals a day by dividing the amount that is proper for your dog. Always keep fresh, and clean water available. Store the product in a cool, and dry place.

 For an optimal balance  With lots of valuable vitamins  With Omega 3 and Omega 6 fatty acids

100 %
balanced & appropriate



20%
PROTEIN
10
FAT



GREAT FOR SKIN
AND COAT



BOOSTS THE
IMMUNE SYSTEM



SUPPORTS
HEART HEALTH



REGULATES THE
DIGESTION



SUPPORTS THE
URINARY TRACT

with LAMB & RICE



COMPLETE AND BALANCED FOR ADULT DOGS LAMB AND RICE DOG FOOD

It is a complete and balanced, lamb protein-containing dog food specially, formulated by cat / dog nutritionists to provide the daily nutritional requirements of all adult breeds.

INGREDIENTS: Dried animal protein and lamb (min. 5% lamb), rice (min. 5%), corn, wheat and wheat derivatives, chicken fat, brewer's yeast, fish oil, dried sugar beet, vitamins and minerals.

ANALYTICAL CONSTITUENTS: Protein 20%, Crude Fat 10%, Crude Ash 9%, Crude Cellulose 6%, Calcium 2%, Phosphorus 1%, Sodium 0.5%, Moisture 10%

NUTRITIONAL ADDITIVES: Vitamin A 12500 Iu/kg, Vitamin D 1000 Iu/kg, Vitamin E 80 mg/kg, Vitamin C 120 mg/kg, Omega 3 0.2 mg/kg Omega 6 0.4 mg/kg

FEEDING INSTRUCTION: The amounts given in the chart are for starters. You may change the amount of food according to your dog's appetite. If you give this food to your dog for the first time, during the first week, feeding should be a mixture of this product, and the existing food.

Your dog's nutritional requirements may differ depending on its age, breed, size, activity frequency, and environmental conditions. Feeding chart was arranged for recommended food amount. By the help of this chart you may feed at least 2 meals a day by dividing the amount that is proper for your dog. Always keep fresh, and clean water available. Store the product in a cool, and dry place.

15 Kg - 3 Kg
PUPPY



For an optimal balance With lots of valuable vitamins With Omega 3 and Omega 6 fatty acids

100 %
balanced & appropriate



26 %
PROTEIN
13 %
FAT



GREAT FOR SKIN
AND COAT



BOOSTS THE
IMMUNE SYSTEM



SUPPORTS
HEART HEALTH



REGULATES THE
DIGESTION



SUPPORTS THE
URINARY TRACT

WET FOOD



with

Lamb

Lamb made Freshly prepared and cooked for great taste and natural nutrition. Balanced & Complete nutrition with minerals and vitamins.

COMPOSITION

Meat and animal derivatives Lamb (min. 4%), Rice (min. 4%), derivatives of vegetables origin, minerals.

ADDITIVES PER KG/ NUTRITIONAL ADDITIVES

Vitamin A 750 i.u./Kg, Vitamin D3 75 i.u./Kg, Vitamin E 10 i.u./Kg, Zinc (Zinc Sulphate Monohydrate) 3.8 mg/kg, Manganese (Manganous Sulphate Monohydrate) 1,9 mg/kg Selenium (Sodium Selenite) 0.02 mg/kg, Iodine (Calcium iodate anhydrous) 0.19 mg/kg, Technological additives: Cassia 1275 mg/kg

ANALYTICAL CONSTITUENTS

Protein 7.5, Fat 4.0, Ash 2.5, Fibre 0.4, Moisture 82

ADULT
400 g e

PATE & TASTY



GREAT FOR SKIN
AND COAT

REGULATES THE
DIGESTION

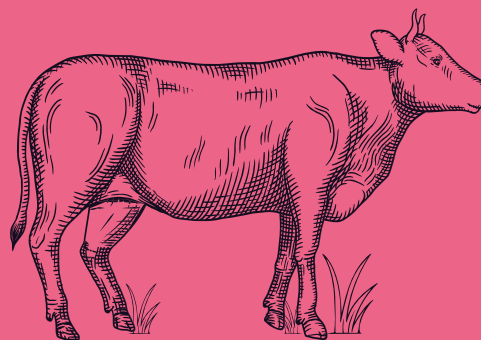
BOOSTS THE
IMMUNE SYSTEM

SUPPORTS
HEART HEALTH

SUPPORTS THE
URINARY TRACT



WET FOOD



★ **PATE & TASTY** ★



GREAT FOR SKIN
AND COAT

REGULATES THE
DIGESTION

BOOSTS THE
IMMUNE SYSTEM

SUPPORTS
HEART HEALTH

SUPPORTS THE
URINARY TRACT



with

Beef

Beef made Freshly prepared and cooked for great taste and natural nutrition. Balanced & Complete nutrition with minerals and vitamins.

COMPOSITION

Meat and animal derivatives Beef (min. 4%), Rice (min. 4%), derivatives of vegetables origin, minerals.

ADDITIVES PER KG/ NUTRITIONAL ADDITIVES

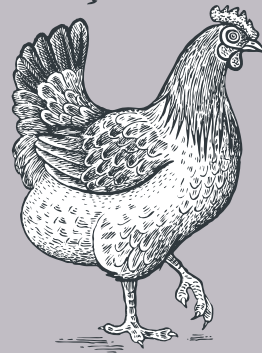
Vitamin A 750 i.u./Kg, Vitamin D3 75 i.u./Kg, Vitamin E 10 i.u./Kg, Zinc (Zinc Sulphate Monohydrate) 3.8 mg/kg, Manganese (Manganous Sulphate Monohydrate) 1,9 mg/kg Selenium (Sodium Selenite) 0.02 mg/kg, Iodine (Calcium iodate anhydrous) 0.19 mg/kg, Technological additives: Cassia 1275 mg/kg

ANALYTICAL CONSTITUENTS

Protein 7.5, Fat 4.0, Ash 2.5, Fibre 0.4, Moisture 82

ADULT
400 g e

WET FOOD



with

Chicken

Chicken made Freshly prepared and cooked for great taste and natural nutrition. Balanced & Complete nutrition with minerals and vitamins.

COMPOSITION

Meat and animal derivatives Chicken (min. 4%), derivatives of vegetables origin, minerals.

ADDITIVES PER KG/ NUTRITIONAL ADDITIVES

Vitamin A 750 i.u./Kg, Vitamin D3 75 i.u./Kg, Vitamin E 10 i.u./Kg, Zinc (Zinc Sulphate Monohydrate) 3.8 mg/kg, Manganese (Manganous Sulphate Monohydrate) 1,9 mg/kg Selenium (Sodium Selenite) 0.02 mg/kg, Iodine (Calcium iodate anhydrous) 0.19 mg/kg, Technological additives: Cassia 1275 mg/kg

ANALYTICAL CONSTITUENTS

Protein 7.5, Fat 4.0, Ash 2.5, Fibre 0.4, Moisture 82

ADULT
400 g e

GREAT FOR SKIN
AND COAT

REGULATES THE
DIGESTION

BOOSTS THE
IMMUNE SYSTEM

SUPPORTS
HEART HEALTH

SUPPORTS THE
URINARY TRACT



WET FOOD



with

Lamb

Lamb made Freshly prepared and cooked for great taste and natural nutrition. Balanced & Complete nutrition with minerals and vitamins.

★ **PATE & TASTY** ★



COMPOSITION

Meat and animal derivatives Lamb (min. 4%), Rice (min. 4%), derivatives of vegetables origin, minerals.

ADDITIVES PER KG/ NUTRITIONAL ADDITIVES

Vitamin A 1000 i.u./Kg, Vitamin D3 100 i.u./Kg, Vitamin E 13 i.u./Kg, Zinc (Zinc Sulphate Monohydrate) 5.0 mg/kg, Manganese (Manganous Sulphate Monohydrate) 2,5 mg/kg Selenium (Sodium Selenite) 0.03 mg/kg, Iodine (Calcium iodate anhydrous) 0.25 mg/kg, Technological additives: Cassia Gum 1275 mg/kg

ANALYTICAL CONSTITUENTS

Protein 8.0, Fat 6.0, Ash 2.0, Fibr 0.4, Moisture 80, Calcium 0.35, Phosphorus/Fosfor 0.23

PUPPY
400 g e

GREAT FOR SKIN
AND COAT

REGULATES THE
DIGESTION

BOOSTS THE
IMMUNE SYSTEM

SUPPORTS
HEART HEALTH

SUPPORTS THE
URINARY TRACT



WET FOOD



LAMB Formula

CHUNK IN GRAVY

COMPOSITION

Meat and meat derivatives (lamb min. 4%), plant products, minerals substances .

NO SOY
COLORANT
ARTIFICIAL PRESERVATIVES

ANALYTICAL CONSTITUENTS

Protein %7.0, Fat %3.0, Fibre %0.4, Ash %3.0, Moisture %82.0

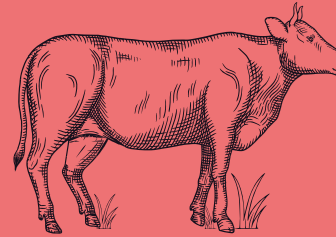
BDIETETIC ADDITIVES

Vitamin A 750 i.u./Kg, Vitamin D3 75 i.u./Kg, Vitamin E 10 i.u./Kg,



ADULT
400 g e

WET FOOD



BEEF Formula

CHUNK IN GRAVY

COMPOSITION

Meat and meat derivatives (BEEF min. 4%), plant products, minerals substances .

NO SOY
COLORANT
ARTIFICIAL PRESERVATIVES

ANALYTICAL CONSTITUENTS

Protein %7.0, Fat %3.0, Fibre %0.4, Ash %3.0, Moisture %82.0

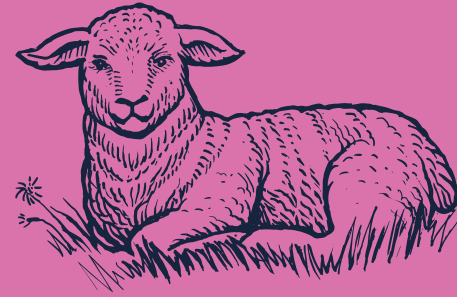
DIETETIC ADDITIVES

Vitamin A 750 i.u./Kg, Vitamin D3 75 i.u./Kg, Vitamin E 10 i.u./Kg,



ADULT
400 g e

WET FOOD



LAMB Formula

CHUNK IN GRAVY

COMPOSITION

Meat and meat derivatives (lamb min. 4%), plant products, minerals substances .

NO SOY
COLORANT
ARTIFICIAL PRESERVATIVES

ANALYTICAL CONSTITUENTS

Protein %7.0, Fat %3.0, Fibre %0.4, Ash %3.0, Moisture %82.0



DIETETIC ADDITIVES

Vitamin A 1000 i.u./Kg, Vitamin D3 100 i.u./Kg, Vitamin E 13 i.u./Kg,

PUPPY
400 g e

WET FOOD



SALMON Formula CHUNK IN GRAVY

COMPOSITION

Meat and meat derivatives, fish and fish derivatives (salmon min. 4%), plant products, minerals substances.

NO SOY
COLORANT
ARTIFICIAL PRESERVATIVES

ANALYTICAL CONSTITUENTS

Protein %7.5, Fat %4.0, Fibre %0.4, Ash %3.0, Moisture %82.0



DIETETIC ADDITIVES

Vitamin A 1000 i.u./Kg, Vitamin D3 100 i.u./Kg, Vitamin E 13 i.u./Kg, Taurine 250 mg,

ADULT
400 g e

WET FOOD



LAMB Formula CHUNK IN GRAVY

COMPOSITION

Meat and meat derivatives (LAMB min. 4%), plant products, minerals substances .

NO SOY
COLORANT
ARTIFICIAL PRESERVATIVES

ANALYTICAL CONSTITUENTS

Protein %7.5, Fat %4.0, Fibre %0.4, Ash %3.0, Moisture %82.0

DIETETIC ADDITIVES

Vitamin A 1000 i.u./Kg, Vitamin D3 100 i.u./Kg, Vitamin E 13 i.u./Kg, Taurine 250 mg,



ADULT
400 g e

WET FOOD



CHICKEN Formula CHUNK IN GRAVY

COMPOSITION

Meat and meat derivatives (chicken min. 4%), plant products, minerals substances .

NO SOY
COLORANT
ARTIFICIAL PRESERVATIVES

ANALYTICAL CONSTITUENTS

Protein %7.5, Fat %4.0, Fibre %0.4, Ash %3.0, Moisture %82.0

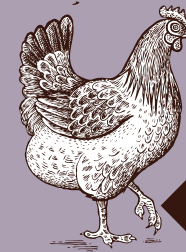
DIETETIC ADDITIVES

Vitamin A 1000 i.u./Kg, Vitamin D3 100 i.u./Kg, Vitamin E 13 i.u./Kg, Taurine 250 mg,



ADULT
400 g e

WET FOOD



CHICKEN Formula CHUNK IN GRAVY

COMPOSITION

Meat and meat derivatives (chicken min. 4%), plant products, minerals substances .

NO SOY
COLORANT
ARTIFICIAL PRESERVATIVES

ANALYTICAL CONSTITUENTS

Protein %8.5, Fat %4.0, Fibre %0.4, Ash %3.0, Moisture %82.0

DIETETIC ADDITIVES

Vitamin A 1000 i.u./Kg, Vitamin D3 100 i.u./Kg, Vitamin E 13 i.u./Kg, Taurine 250 mg,



**KITTEN
400 g e**

SeBoss®

Proper Food for Pets



SeBoss®

Proper Food for Pets





CAT LITTER

JET CLUMPING IN SECONDS



**HIGH LIQUID
ABSORPTION**



**STRONG
CLUMPING**



**%99,5
DUST FREE**



**ODOR
CONTROL**



**CLEAN
PAWS**



**NATURAL AND
HYGIENIC**



**LONG TERM
USE**



JET CLUMPING IN SECONDS

TECHNICAL DATA SHEET

| SPECIFICATIONS | FINE GRAINED | COURSE GRANIED |
|---|----------------------|----------------------|
| Composition | 100% White Bentonite | 100% White Bentonite |
| Parfume | None | None |
| Grain Size | 0.5 - 2.38 mm | 1.5 - 4.0 mm |
| Density | -860 - 880 g/L | -850 - 870 g/L |
| Molsture | max 10% | max 10% |
| Water Absarption Capacity | 280 - 360% | 280 - 340% |
| Diffusion of ammonia (with Salina test) | 5 - 10 ppm | 5 - 10 ppm |
| Dust Content (100 micron) | max 0.0012% | max 0.0008% |
| Clumping (20ml water) | 55-60 g | 65-70 g |



JET CLUMPING IN SECONDS





Kılıçdede Mah. Kastamonu Sk.
Borkonut Center No: 6/111
İLKADIM / SAMSUN / TURKIYE
info@globaltradeagencies.com
GSM: 0541 382 04 82
www.globaltradeagencies.com

www.seboss.com.tr